

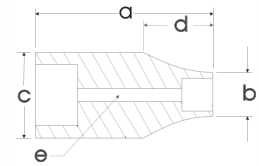
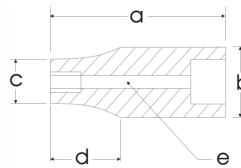
3/4" DRIVE SOCKETS & ATTACHMENTS

12 Point Standard Length

Hex Size	12 Point Part No.	Overall Length mm a	Drive End mm b	Hex End mm c	Taper Length mm d	Bolt Clearance mm e
24mm	M3424	51	36	34	—	—
25mm	M3425	51	35	36	16	—
26mm	M3426	51	36	37	16	—
27mm	M3427	51	36	38	22	—
28mm	M3428	51	36	39	22	—
29mm	M3429	51	38	40	22	—
30mm	M3430	54	38	42	24	—
32mm	M3432	56	38	44	26	—
35mm	M3435	58	42	48	26	—
36mm	M3436	58	42	50	28	—
38mm	M3438	58	45	52	28	—
41mm	M3441	64	45	56	30	—
42mm	M3442	64	45	57	30	—
46mm	M3446	68	47	62	34	—
50mm	M3450	72	48	68	36	—
54mm	M3454	74	48	72	38	—
55mm	M3455	76	48	74	40	—
58mm	M3458	78	48	78	40	—
60mm	M3460	78	48	80	42	—

Federal Spec. CDA 39-GP12b U.S. GGG-W-641E ANSI Spec. B107.5

Note: Not for impact use. Above items are for hand use only.



Axle Nut Sockets

Hex Size	Part No.	Description	Length, in.
2 ³ / ₃₂ "	AN1	6 point	3
2 ¹ / ₄ "	AN2	6 point	3
2 ³ / ₈ "	AN3	6 point	3
2 ¹ / ₂ "	AN4	6 point	3
2 ⁹ / ₁₆ "	AN5	6 point	3
2 ⁵ / ₈ "	AN6	6 point	3
2 ³ / ₄ "	AN7	6 point	3
2 ⁷ / ₈ "	AN8	6 point	3
3"	AN9	6 point	3
3 ¹ / ₄ "	AN10	6 point	3
3 ¹ / ₂ "	AN11	6 point	3
3 ⁷ / ₈ "	AN12	6 point	3
4"	AN13	6 point	3
4 ¹ / ₈ "	AN14	6 point	3
2 ⁹ / ₁₆ "	AN31	8 point	3
3"	AN32	8 point	3
3 ¹ / ₄ "	AN33	8 point	3
3 ⁷ / ₈ "	AN34	8 point	3
4 ⁷ / ₈ "	AN35	8 point	3
2 ³ / ₈ "	AN51*	6 point	3
2 ⁹ / ₁₆ "	AN52*	6 point	3

* Fits special "Rounded" hex nut as found on DANA axles.